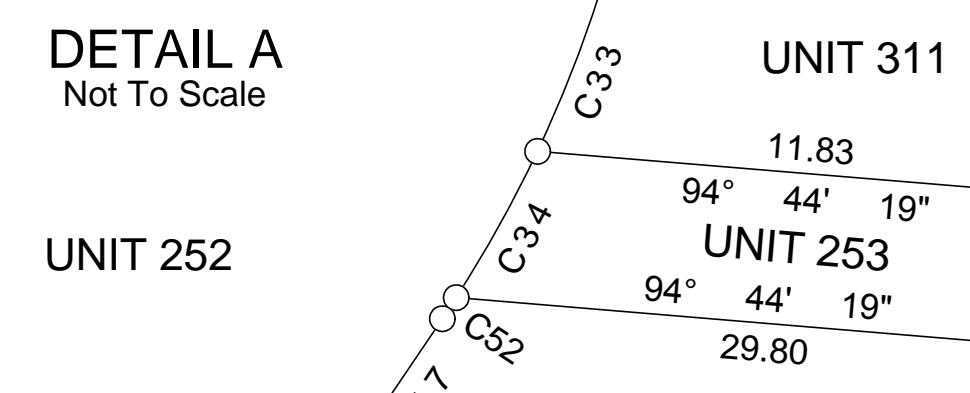
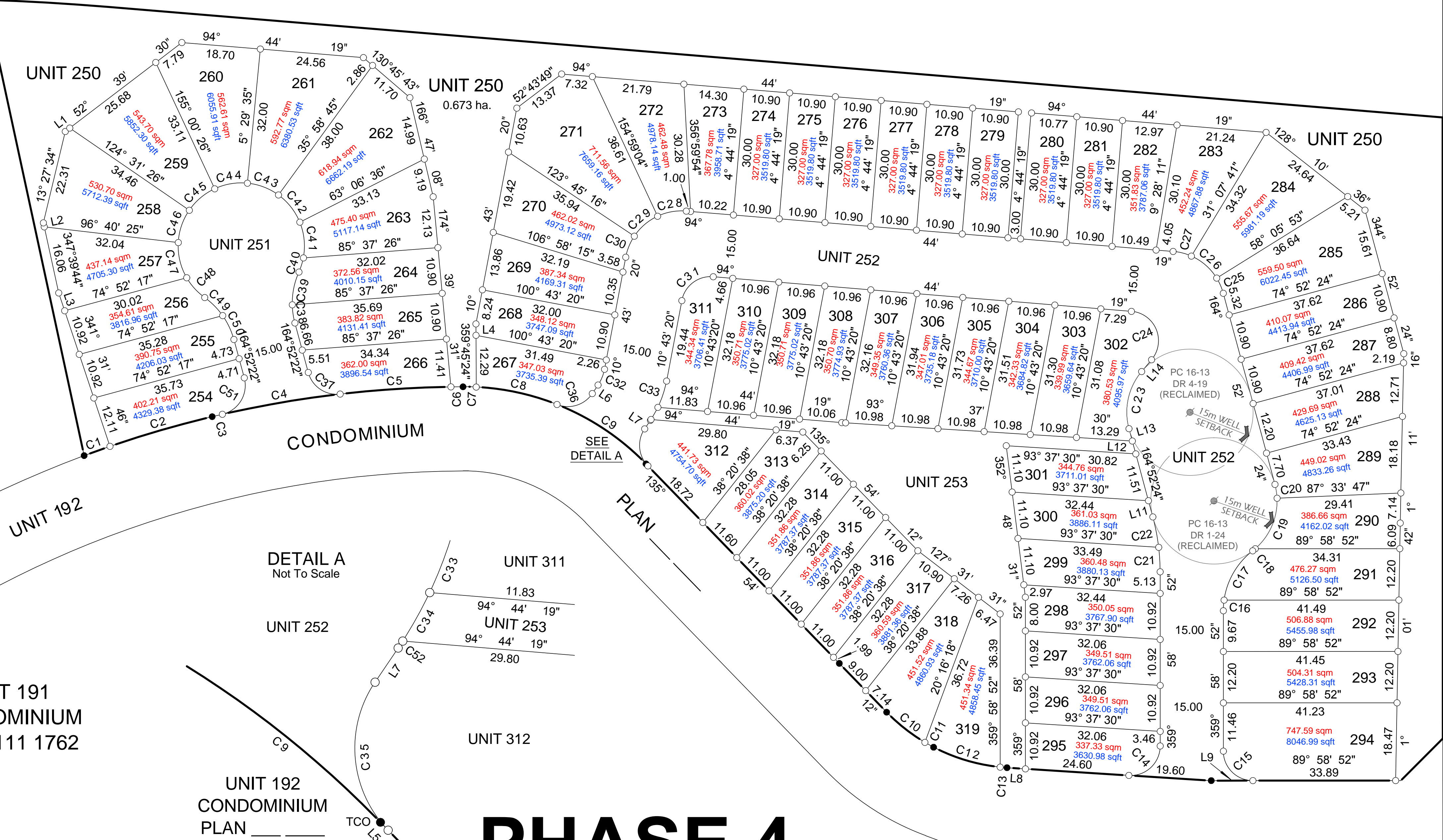


HIGHWAY No. 1A

PUBLIC WORK (ROAD) PLAN 841 0813

NORTH BOUNDARY SECTION 13

PUBLIC WORK (ROAD)
PLAN 891 0263



UNIT 191
CONDOMINIUM
PLAN 111 1762

UNIT 192
CONDOMINIUM
PLAN _____

PHASE 4

LOT AREAS:

Area in square metres shown thus: **362.01 sqm**
Area in square feet shown thus: **3896.69 sqft**

CURVE TABLE

No.	Delta	Arc	Radius	Chord Bearing	Chord	No.	Delta	Arc	Radius	Chord Bearing	Chord	No.	Delta	Arc	Radius	Chord Bearing	Chord	No.	Delta	Arc	Radius	Chord Bearing	Chord
C1	1°26'11"	6.52	260.00	250°17'26"	6.52	C16	8°04'06"	2.53	18.00	184°00'58"	10.26	C31	84°00'58"	10.26	7.00	232°43'49"	9.37	C46	31°18'38"	8.20	15.00	198°52'06"	8.10
C2	5°34'15"	25.28	260.00	253°47'40"	25.27	C17	44°09'11"	13.87	18.00	210°07'34"	13.53	C32	23°17'08"	4.06	10.00	22°21'54"	4.04	C47	33°18'44"	8.72	15.00	166°33'25"	8.60
C3	0°32'54"	2.49	260.00	256°51'14"	2.49	C18	3°00'49"	0.79	15.00	50°41'44"	0.79	C33	15°07'49"	6.60	25.00	18°17'15"	6.58	C48	24°25'44"	6.40	15.00	137°41'11"	6.35
C4	6°15'14"	28.38	260.00	260°15'18"	28.36	C19	51°37'32"	13.52	15.00	23°22'34"	13.06	C34	7°35'10"	3.31	25.00	29°38'44"	3.31	C49	19°20'59"	6.08	18.00	315°08'49"	6.05
C5	5°48'39"	26.37	260.00	266°17'14"	26.36	C20	12°41'23"	3.32	15.00	351°13'06"	3.32	C35	78°06'16"	9.54	7.00	174°57'20"	8.82	C50	20°03'03"	6.30	18.00	334°50'50"	6.27
C6	0°37'55"	2.87	260.00	269°30'31"	2.87	C21	6°40'27"	5.82	50.00	356°38'39"	5.82	C36	77°32'48"	9.47	7.00	72°46'52"	8.77	C51	92°15'19"	11.27	7.00	31°00'01"	10.09
C7	2°58'51"	3.13	60.24	271°18'54"	3.13	C22	8°26'01"	7.36	50.00	349°05'25"	7.35	C37	81°29'27"	9.96	7.00	124°07'38"	9.14	C52	0°34'10"	0.25	25.00	33°43'24"	0.25
C8	18°44'57"	19.71	60.24	282°10'48"	19.62	C23	55°11'42"	14.45	15.00	192°28'15"	13.90	C38	13°55'45"	4.38	18.00	171°50'14"	4.37						
C9	24°20'56"	25.60	60.24	303°43'44"	25.41	C24	125°19'48"	15.31	7.00	337°24'12"	12.44	C39	25°28'17"	8.00	18.00	191°32'15"	7.94						
C10	15°14'37"	11.61	43.63	128°16'54"	11.57	C25	16°46'32"	3.95	13.50	336°29'09"	3.94	C40	13°29'04"	3.53	15.00	17°31'51"	3.52						
C11	3°06'10"	2.36	43.63	119°06'30"	2.36	C26	34°16'01"	8.07	13.50	310°57'52"	7.95	C41	33°02'14"	8.65	15.00	354°16'12"	8.53						
C12	21°47'42"	16.60	43.63	106°39'34"	16.50	C27	19°05'33"	4.50	13.50	284°17'05"	4.48	C42	31°46'20"	8.32	15.00	321°51'55"	8.21						
C13	2°08'13"	1.63	43.63	94°41'37"	1.63	C28	29°45'14"	7.01	13.50	259°51'42"	6.93	C43	30°29'10"	7.98	15.00	290°44'10"	7.89						
C14	93°38'38"	11.44	7.00	46°48'11"	10.21	C29	31°13'48"	7.36	13.50	229°22'10"	7.27	C44	30°29'10"	7.98	15.00	260°15'01"	7.89						
C15	90°00'00"	11.00	7.00	134°58'52"	9.90	C30	23°01'56"	5.43	13.50	202°14'18"	5.39	C45	30°29'00"	7.98	15.00	229°45'56"	7.89						

LINE TABLE

Line	Bearing	Distance	Line	Bearing	Distance
L1	52°39'30"	1.34	L8	273°37'30"	4.39
L2	347°39'44"	0.98	L9	269°58'52"	9.89
L3	341°31'46"	4.46	L10	269°58'52"	1.22
L4	179°45'24"	2.71	L11	164°52'24"	3.99
L5	135°54'12"	0.65	L12	164°52'24"	3.17
L6	34°00'28"	2.45	L13	164°52'24"	3.03
L7	34°00'28"	2.45	L14	40°04'06"	3.66